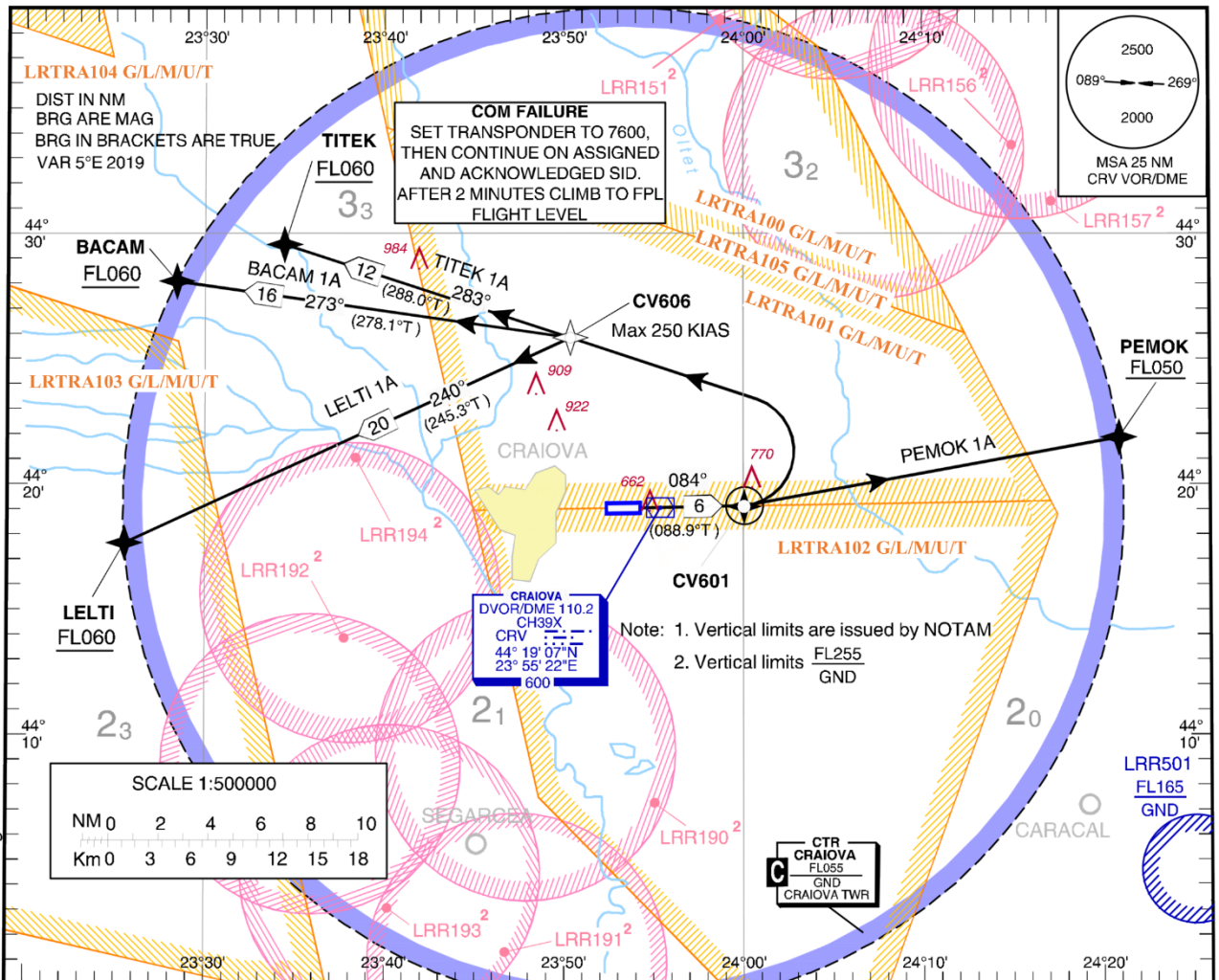


LRCV/ CRA
STANDARD INSTRUMENT DEPARTURE CHART
(SID) - ICAO

CRAIOVA, ROMANIA
RNAV1 (GNSS) RWY 08
BACAM 1A, LELTI 1A, PEMOK 1A, TITEK 1A

TRANSITION ALTITUDE
4000

GRANAT Tower 124.575
GRANAT Tower ALTN 122.100



SID Identifier	DESCRIPTION
BACAM 1A	Climb to CV601 on course 084°M . At CV601 , turn LEFT direct to CV606 (Max 250 KIAS), then to BACAM at or above FL060 .
LELTI 1A	Climb to CV601 on course 084°M . At CV601 , turn LEFT direct to CV606 (Max 250 KIAS), then to LELTI at or above FL060 .
PEMOK 1A	Climb to CV601 on course 084°M . At CV601 , turn LEFT direct to PEMOK at or above FL050 .(1) (1) ATS climb gradient: 3.8% up to PEMOK , due to airspace restriction. Advise ATC if unable to ensure the ATS climb gradient.
TITEK 1A	Climb to CV601 on course 084°M . At CV601 , turn LEFT direct to CV606 (Max 250 KIAS), then to TITEK at or above FL060 .(1) (1) ATS climb gradient: 3.7% up to FL060 , due to airspace restriction. Advise ATC if unable to ensure the ATS climb gradient.

LRCV/ CRA

CRAIOVA, ROMANIA

RNAV1 (GNSS) RWY 08

BACAM 1A, LETI 1A, PEMOK 1A, TITEK 1A

AERONAUTICAL DATA TABULATION

RNAV1 (GNSS) SID RWY 08	
<i>Waypoint Identifier</i>	<i>Coordinates</i>
CV601	44°19'10.6"N 024°00'02.9"E
CV606	44°25'54.1"N 023°50'22.5"E
BACAM	44°28'07.0"N 023°28'26.0"E
LETI	44°17'40.0"N 023°25'32.0"E
PEMOK	44°21'52.9"N 024°20'54.5"E
TITEK	44°29'35.8"N 023°34'25.9"E
DER 08	44°19'06.2"N 023°54'28.6"E

TABULAR DESCRIPTION

RNAV1 (GNSS) SID RWY 08												
<i>Serial No</i>	<i>SID ID</i>	<i>Path Descriptor</i>	<i>Waypoint ID</i>	<i>Flyover</i>	<i>Course °M (°T)</i>	<i>Magnetic Variation</i>	<i>Distance (NM)</i>	<i>Turn Direction</i>	<i>Altitude (ft)</i>	<i>Speed (kts)</i>	<i>VPA/TCH</i>	<i>NAV SPEC</i>
010	BACAM 1A	CF	CV601	Y	084 (088.9)	5.0E	6	-	-	-	-	RNAV 1
020	BACAM 1A	DF	CV606	-	-	5.0E	-	L	-	-250	-	RNAV 1
030	BACAM 1A	TF	BACAM	-	273 (278.1)	5.0E	16	-	+FL060	-	-	RNAV 1
010	LETI 1A	CF	CV601	Y	084 (088.9)	5.0E	6	-	-	-	-	RNAV 1
020	LETI 1A	DF	CV606	-	-	5.0E	-	-	-	-250	-	RNAV 1
030	LETI 1A	TF	LETI	-	240 (245.3)	5.0E	20	-	+FL060	-	-	RNAV 1
010	PEMOK 1A	CF	CV601	Y	084 (088.9)	5.0E	6	-	-	-	-	RNAV 1
020	PEMOK 1A	DF	PEMOK	-	-	5.0E	-	-	+FL050	-	-	RNAV 1
010	TITEK 1A	CF	CV601	Y	084 (088.9)	5.0E	6	-	-	-	-	RNAV 1
020	TITEK 1A	DF	CV606	-	-	5.0E	-	-	-	-250	-	RNAV 1
030	TITEK 1A	TF	TITEK	-	283 (288.0)	5.0E	12	-	+FL060	-	-	RNAV 1